



Established 1925

KANSAS GEOLOGICAL SOCIETY

# BULLETIN

Volume 86 Number 4

July—August 2011

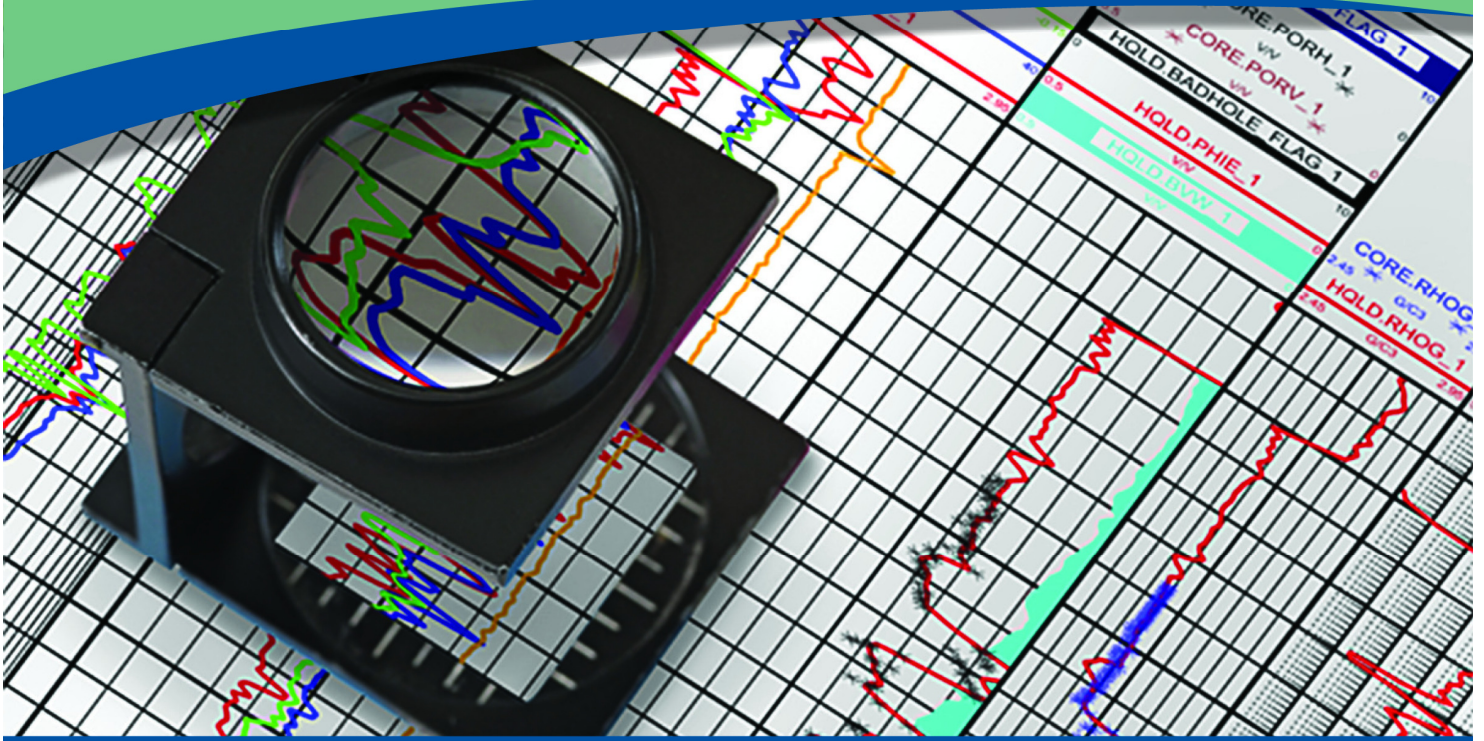
## IN THIS ISSUE

*Letchworth State Park—upstate  
New York: vacation photos —pg. 14*

**Geo-Scenes  
Belize Field Trip  
Pg. 19**



# Magnified Well Data Quality



## That is TGS' Focus

Save time and money – TGS has already closely examined and processed well data for standardization and quality assurance, backed by a focused customer support team.

### Complete Curve Digital Wells

LAS and LAS Plus library expanding across North America

### Spatially Accurate Directional Surveys

Directional Survey Plus data thoroughly researched and reprocessed

### Nationwide Production Data

Daily incremental updates available with visualization software

### Formation Tops Picked

Available in major basins across North America

Find out more at [www.tgsnopec.com/welldata](http://www.tgsnopec.com/welldata) or contact TGS Well Data at 281-319-4944 or [WellData@tgsnopec.com](mailto:WellData@tgsnopec.com)



Geophysical  
Products



Geological  
Products



Imaging  
Services



[www.tgsnopec.com](http://www.tgsnopec.com)

# Table of Contents

---

**Features: Geo-scenes .....19**  
**Vacation Photos .....14**

## Departments & Columns:

**KGS Tech Talks .....4**  
**President’s Letter .....7**  
**Advertiser’s Directory .....8**  
**From the Manager..... 9**  
**KGS Board Minutes .....16**  
**Professional Directory .....23 & 24**  
**Exploration Highlights ..... 26**  
**Kansas Geological Foundation .....28**  
**KGF Memorials.....30**

## ON THE COVER:

### Letchworth State Park in upstate New York

is roughly 17 miles long, covering 14,350 acres of land along the Genessee River. Within the park there are three large waterfalls on the river and perhaps as many as fifty waterfalls found on tributaries that flow into it.; the gorge formed by the river, with rock walls rising up to 550 feet in places, which narrow to 400 feet across above the middle of the three falls, is how the area became known as the Grand Canyon of the East.

---

## CALL FOR PAPERS

The Kansas Geological Society Bulletin, which is published bimonthly both in hard-copy and electronic format, seeks short papers dealing with any aspect of Kansas geology, including petroleum geology, studies of producing oil or gas fields, and outcrop or conceptual studies. Maximum printed length of papers is 5 pages as they appear in the Bulletin, including text, references, figures and/or tables, and figure/table captions. Inquiries regarding manuscripts should be sent to Technical Editor Dr. Sal Mazzullo at [salvatore.mazzullo@wichita.edu](mailto:salvatore.mazzullo@wichita.edu), whose mailing address is Department of Geology, Wichita State University, Wichita, Kansas 67260. Specific guidelines for manuscript submission appear in each issue of the Bulletin, which can also be accessed on-line at the Kansas Geological Society web site at <http://www.kgslibrary.com>

# SOCIETY Technical Meetings

## Spring 2011 Schedule

**There are no technical meetings scheduled for the summer months.  
We will reconvene in September**

*Photo taken at the February 22 technical talk featuring Brian Cardott of the Oklahoma Survey speaking on the Hartshorne Coal Rank Applied to Arkoma Basin Coalbed-methane Activity in Oklahoma.*

### **Location for Technical Meetings**

*All KGS technical presentations are held at 12:30 p.m. at the **Wichita Bar Association**, located at **225 N. Market**, ground floor conference room, unless otherwise noted.*

*Note: For those geologists who need 30 points to renew their licenses, there will be a sign-in sheet at each presentation and also a certificate of attendance.*



## BOARD OF DIRECTORS

---

### PRESIDENT

Doug V. Davis

### SECRETARY

Rocky Milford

### DIRECTORS

Ken Dean  
Rick Saenger  
Ryan Dixon

### PRESIDENT-ELECT

Kent Scribner

### TREASURER

Marjorie Noel

### ADVISORS

Don Beauchamp  
Alan DeGood

## COMMITTEE CHAIRMEN

---

### Advertising

Kent Scribner

### Advisory

Don Beauchamp  
Alan DeGood

### Annual Banquet

Bob Bayer

### Budget Committee

Marjorie Noel

### Bulletin

Sal Mazzullo

### Continuing Education

Robert Cowdery

### Distinguished Awards

Rick Saenger

### Directory

Larry Richardson

### Environmental

Kent Matson

### Field Trip

Larry Skelton

### Fishing Tournament

Randy Teter

### Future Plans

Ernie Morrison

### Golf

David Barker

### Historian

Larry Skelton

### Investment

Marjorie Noel

### Library

Roger Martin

### Membership

Ted Jochems

### Nomenclature

Larry Friend

### Picnic

John H. Morrison, III

### Public Relations

Marjorie Crane-Noel

### Shooting Tournament

Robert Cowdery

### Technical Program

Larry Richardson

### Ticket Sales

Robert Cowdery

Bill Shepherd

## A.A.P.G. DELEGATES

---

Ernie Morrison	Robert Cowdery	Doug Davis
2013	2012	2012

## BULLETIN STAFF

---

### EDITOR

Sal Mazzullo  
salvatore.mazzullo@wichita.edu (316) 978-7211

### ADVERTISING

Kent Scribner  
Stelbar Oil Corp. (316) 264-8378

### PROFILES/MEMORIALS

Robert D. Cowdery  
Consultant (316) 267-9030

### EXPLORATION HIGHLIGHTS

John H. Morrison, III  
Independent O&G (316) 263-8281

### STATE SURVEY

Rex Buchanan  
KS Geological Survey (785) 864-3965

### SOCIETY NEWS

KGS Library (316) 265-8676

### EDITOR EMERITUS

Wes Hansen (316) 863-7313

## K.G.S. LIBRARY

---

PHONE 316-265-8676 FAX 316-265-1013

email: [frontdesk@kgslibrary.com](mailto:frontdesk@kgslibrary.com) or

Web: [www.kgslibrary.com](http://www.kgslibrary.com)

### LIBRARY MANAGER

Rebecca Radford 265-8676

[manager@kgslibrary.com](mailto:manager@kgslibrary.com)

The KGS *Bulletin* is published bi-monthly by the Kansas Geological Society, with offices at 212 North Market, Wichita, Kansas 67202 Copyright 2010, The Kansas Geological Society. The purpose of the *Bulletin* is to keep members informed of the activities of the Society and to encourage the exchange and dissemination of technical information related to the Geological profession. Subscription to the *Bulletin* is by membership in the Kansas Geological Society. Limited permission is hereby given by the KGS to photocopy any material appearing in the KGS *BULLETIN* for the non-commercial purpose of scientific or educational advancement. The KGS, a scientific society, neither adopts nor supports positions of advocacy, we provide this and other forums for the presentation of diverse opinions and positions. Opinions presented in these publications do not reflect official positions of the Society.

# TRILOBITE TESTING INC

Eleven Trucks Serving  
Kansas - Colorado - Texas  
Nebraska - Illinois

Slickline services using the same  
Alpine Electronic Pressure  
Guages as used on DST's

Back pressure testing (G1 & G2)  
DST's

**1-800-728-5369**

**FAX: 1-785-625-5620**  
**trilobite @eaglecom.net**

#### SHOPS LOCATED IN:

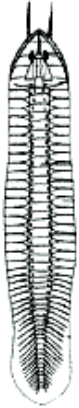
Hays, KS

Scott City, KS

Pratt, KS

Hugoton, KS

Clay City, IL



## ***CAN YOU NAME THE CRITTER?***

**Sponsored by Trilobite Testing, Inc.**

Is your paleo up to date?

If you know the name of the trilobite,  
submit your guess via e-mail to  
manager@kgslibrary.com

Remember that *Trilobite Testing* is  
sponsoring your efforts, so be sure to thank  
Paul Simpson the next time you see him.

**The last trilobite was correctly identified by**

**Kris Wells**

**Mustang Fuel Corp.**

***Carolinites genacinia***

**Bulletin committee members and PhD's in  
Paleontology are prohibited from entering.**

## **KGS Annual Picnic**

**Friday, August 19th**

**All Star Sports West**

**8333 W. 21st Street**

**Food Served at 6:00 PM**

**Bingo & Activities start at 7:00 PM**



# President's Letter

---

Dear Members,

Greetings fellow geologists, I hope that all is going well for each of you this summer. As I am writing this letter, the Golf Tournament Committee is getting ready for tomorrow. Dave Barker and his committee will be presenting a great event. Also, remember to thank all the girls from the library for their help.

Marj Crane –Noel and her picnic committee are working hard towards the August Picnic. Again, it will be at the West All Star Sports on August 19<sup>th</sup>. So bring your spouse, children and/or grandchildren and have some fun.

This year Randy Teter and the Fishing Tournament Committee have decided to have a fall program. The tournament will be at Pratt County Lake September 16<sup>th</sup>. Finally, the Sporting Clays Tournament is scheduled for October 7<sup>th</sup>. Sign-up sheets will be in the library.

In talking with Bob Cowdery, he has about half of the fall lecture program scheduled. Also, he will be setting a program for continuing education for this fall. This class will be taught by Larry Richardson. So watch for the date.

The library and the Walters' Digital Library sales are both doing very well. Which is why it is so difficult to find well-site geologists for our drilling programs.

Have a great summer!

Respectfully submitted,  
Douglas V. Davis



## GRADUATE EDUCATION for active professionals

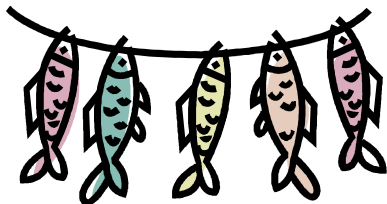
<i>Through:</i>	<i>Leading to:</i>
Workshops	Academic credits
Field Trips	Certificates (pending)
Distance Education	M.S. degree

*With specializations in:*  
 Petroleum Geology  
 Groundwater  
 Exploration Geophysics  
 Environmental Geochemistry

*Information:*  
 KSU Continuing Education: [www.dce.ksu.edu](http://www.dce.ksu.edu)  
 KSU Geology Department: [www.ksu.edu/geology](http://www.ksu.edu/geology)  
 KSU Graduate School: [www.ksu.edu/grad](http://www.ksu.edu/grad)  
 or e-mail George Clark, interim dept. head: [grc@ksu.edu](mailto:grc@ksu.edu)

### ADVERTISER'S DIRECTORY

	<i>page</i>
Allied Cementing Company, Inc	25
American Energies Corp.	12
Duke Drilling	25
GeoCare Services AAPG	13
Kansas Geological Foundation	28
Kansas State University	8
Lockhart Geophysical	25
LogSleuth-MJ Systems	29
MBC Well logging	25
Murfin Drilling Company, Inc	25
Neuralog	22
PARAGON Geophysical Services, Inc	13
Professional Directory	23-24
Sterling Seismic Services	22
Sunrise Oilfield Supply	25
TGS-NOPEC Geophysical Company	2
Tomcat Drilling	25
TRES Management	12
Trilobite Testing	6
Walters Digital Library	10
Weatherford	31
Well Enhancement Services, LLC	12



## KGS Fishing Tournament September 16th

Will be held at the  
 Pratt County Lake

Watch the web site for the  
 registration flyer

### ADVERTISER'S RATES: 2011

Full Page	B&W	Color
6 issues	\$2,000	\$2,500
3 issues	\$1,080	\$1,325
1 issue	\$480	\$525
<b>1/2 Page</b>		
6 issues	\$1,000	\$1,500
3 issues	\$540	\$825
1 issue	\$225	\$350
<b>1/4 Page</b>		
6 issues	\$600	\$900
3 issues	\$325	\$525
1 issue	\$150	\$250
<b>1/8 Page</b>		
6 issues	\$300	\$500
3 issues	\$175	\$325
1 issue	\$75	\$185
<b>Professional Ad (Business Card)</b>		
6 issues	\$90	\$180

*For one-time ads, call Rebecca at 316-265-8676*



## From The Manager

Dear Members,

Summer seems to have started early this year and the heat is intense out there in the oil patch. I think we should all be thankful for the men & women who are willing to go out and watch a well in this weather!

The library is staying quite busy this summer. Usually it slows down a bit in June & July but not this year. People are busy and we love it. We are adding images weekly to the Walters Digital Library. To the tune of several thousand images. I have several people linking Scout Cards so we are trying to get those all up to date also. It is a constant job but we are at least seeing cards from 2010 now and as we get new ones, we scan and send them in to be linked.

The digital library membership has increased to 197 and we are looking forward to that 200th membership. I think I might have a special gift for the 200th person to join.

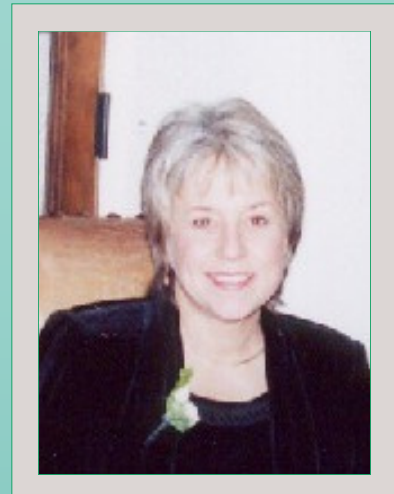
We had our Annual Golf Tournament on June 24th. The next event will be the KGS Picnic being held again this year at All Star Sports West. Cash prizes for bingo and a good time for all is what our Chair Marj Noel has in store for us. Hope to see you there! That will be on the Friday before KIOGA, August 19th.

We will have a booth at KIOGA again this year. It is always a nice time to see many of our out of town members. Here's wishing you all a wonderful summer!

Respectfully submitted,

*Rebecca Radford*

Manager



Let Us Print Your Geo Reports  
And Save Your Time For Finding More Oil & Gas  
Top Quality Color Printing For Our Membership  
Email your files to: [tammy@kgslibrary.com](mailto:tammy@kgslibrary.com)

The Kansas Geological Society & Library

# Robert F. Walters Digital Library

The most complete source for Kansas data at your fingertips

no matter where in the world you are!



www.kgslibrary.com

316-265-8676

API No.	County	Sec	Twp	Rge	Operator	Lease Name	Well No.	Spot	Location	N S	E W	Spud	Completion	Depth	EL KB	EL DP	EL GL	Status
15-03-0002	COMANCHE	06	31S	16W	GLER OIL / SINGLAR OIL / CARTER OIL	GALLUP-ROBBING	1		3300 PSL	1900 PEL		10/11/1967	5100	2034				
15-03-0001	COMANCHE	36	31S	16W	MESSIAH-HENDHART OIL CO	SCHAJETTE EST B	1		440 PSL	1210 PEL	12/05/1960	12/09/1960	4990	2001				
15-03-0004	COMANCHE	15	31S	16W	F. K. JOHNSON	ROBBING	1		2310 PSL	2310 PEL		12/03/1964	5025	2052				
15-03-0009	COMANCHE	23	31S	16W	BARBARA OIL CO	ROBBING UNIT	1		1210 PSL	1210 PEL		06/04/1963	4968	2037				
15-03-0060	COMANCHE	23	31S	16W	BARBARA OIL CO	ROBBING B	1		1210 PSL	1210 PEL		07/03/1963	5465	2042				
15-03-0061	COMANCHE	23	31S	16W	BARBARA OIL CO	ROBBING	1		4290 PSL	2370 PEL		02/27/1963	5465	2042				
15-03-0013	COMANCHE	36	31S	16W	INTER-SEA SERVICE	SHAW	1											
15-03-1001	COMANCHE	14	31S	16W	BARBARA OIL CO		1											
15-03-1002	COMANCHE	10	31S	16W	BARBARA OIL CO		1											

**Completion Card - IOG**

Zoom free  
Buy PDF \$2.00  
TIF: 300x300 dpi Buy TIF \$2.00  
2 pages ID 148220 15-03-10002 Feedback for Image

**Drill Stem Test**

Preview free  
Buy JPG \$0.50  
1 page ID 1015744 15-03-10002 Feedback for Image

JPG: 150x150 dpi

**Drill Stem Test**

Preview free  
Zoom free

**BARBARA OIL CO**

Contr. PICKRELL  
Z047  
E. 2050th Comm. S

**TEST DATA:**

Tered From 1,880' To 1,910'  
Hydraulic Mud Pressure—Initial (A) 2500'  
Flow Pressure—Initial (a) 0  
Bottom Hole Pressure—Initial (F) 1,660'  
Tool Open -- Hr. 90 Min; Shut-in-Initial -- Hr. 30 Min  
Chokes; Surface: 5/8" Bottom: open Fluid Cushion: Type:  
Recovery: 100' Gas cut smd.

**SURFACE DATA:**

BLow: Good blow with gas to surface in 10 seconds at a 295000.0 lb. ...

**LATERAL LOG SURVEY**

STAMBERGER WELL SURVEYING CORPORATION  
LATERAL LOG SURVEY

COUNTY: COMANCHE  
FIELD OF SURVEY: 10-31S-16W  
WELL: BARBARA OIL NO. 1  
COMPANY: BARBARA OIL COMPANY

WELL: BARBARA OIL COMPANY  
MOSKOWITZ NO. 1

LOCATION SEC. 10-31S-16W  
COUNTY: COMANCHE  
STATE: KANSAS

REMARKS: LATERAL LOG 3' ... LATERAL LOG 2' ...

Check It Out: Log in as a guest - username = guest, password = guest



*The*  
**2011 AAPG  
MID-CONTINENT  
SECTION MEETING**



Oklahoma City, Oklahoma  
Saturday through Tuesday,  
October 1<sup>st</sup> - 4<sup>th</sup> 2011

*Terry Holbrah, General Chair:*

*“The Fun  
Begins In Less Than  
Five Months!”*

[www.2011AAPGMCSecionMeeting.org](http://www.2011AAPGMCSecionMeeting.org)



## WOULD YOU LIKE TO INCREASE YOUR PRODUCTION AT A FRACTION OF THE COST OF HORIZONTAL DRILLING?



**Well Enhancement Services, LLC** is jetting laterals utilizing new technology and coiled tubing. We now have the ability to place hundreds of gallons of acid hundreds of feet away from the well bore. This allows us to not only enhance existing production but to produce reserves previously unreachable. It has established itself by repeatedly increasing production in both new and existing wells. Contact us for more information, questions or to schedule your next well with **WES**.



*“Tap into success.....with WES”*

### Please Contact Us:

Phone: (785) 625-5155

Fax: (785) 625-4151

Field: (785) 259-4638

wesofhays@hotmail.com  
Box 87, Schoenchen, KS 67667



MANAGEMENT INC.

7011 North Robinson  
Oklahoma City, OK 73116

405-842-7888 Phone • 405-842-7885 Fax

www.tresmanagement.com  
Email: tres@tresmanagement.com

Providing engineering, planning, and site supervision services for all phases of the oil & gas operations:  
Drilling, completion, workover, and facilities

Current activity includes providing engineering and supervision on horizontal projects in the Mid-Continent, Rocky Mountain, and Gulf Coast regions.

# WANTED



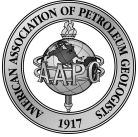
## LOW BTU GAS to Buy or Treat

www.NitrogenRejectionUnit.com



American Energies Corporation

316-263-5785



Security for AAPG Members  
& Their Families  
Through Group Insurance

*Life*  
*Health*  
*Dental*  
*Disability*  
*Auto and Homeowner*  
*Supplemental Plans*

AAPG's  
GeoCare Benefits Insurance Program  
P. O. Box 189  
Santa Barbara, CA 93102-0819  
800-337-3140  
E-mail: [geocarebenefits@agia.com](mailto:geocarebenefits@agia.com)  
[www.geocarebenefits.com](http://www.geocarebenefits.com)

## Kansas Geological Foundation Video / DVD Collection

The KGF has an extensive collection  
of videos available for check-out  
at no charge.

Only pay for shipping back.

These are ideal for classroom or  
general public viewing.

See the web for  
titles & descriptions  
[www.kgfoundation.org](http://www.kgfoundation.org)

Call 316-265-8676  
Ask for Janice to check out videos

## KGS Picnic

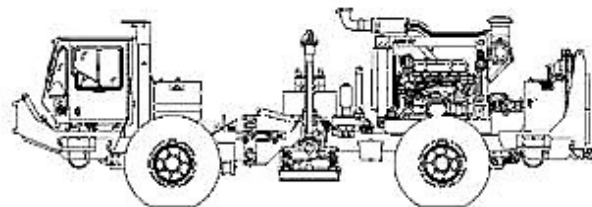
Friday

August 19th

At All Star Sports  
8333 West 21st street

Come out for an  
evening of fun!

Lots of cash prizes for  
Bingo!!



~The TOP CHOICE for 3D SEISMIC~

John H Beury III ~ Pres John Aguilar ~ Op. Mgr.

PHONE (316) 636 - 5552 FAX (316) 636 - 5572

3500 N. Rock Rd., Bldg 800, Suite B  
Wichita, KS 67226

[paragon@parangongeo.com](mailto:paragon@parangongeo.com)

## Letchworth State Park Upstate New York

KGS employee Tammy Nichols and her son, Lee Huff visited the upstate New York area around Rochester and Buffalo.

These photos were taken at Letchworth State Park. This gorge is known as the Grand Canyon of the East Coast. It is a shale formation with some layers of limestone and sandstone.

The bedrock that is exposed in the gorge is Devonian in age. There are many marine fossils exposed in the rock. This is in the Genesee River valley which is very young geologically, caused by a diversion of the river from the old valley by the last continental glacier, forcing the river to cut a new section of the valley.

There are three major waterfalls in the park; Upper, Middle and Lower Falls. All are located in Portage Canyon in the southern section of the park.

The highest waterfall in New York State is located in this park. It is a ribbon waterfall that is located on a tributary creek a short distance east of Inspiration Point overlook, just west of the park visitor center. Known as Inspiration Falls, it has a total drop of 350 feet.



Thank you Tammy and Lee for sharing these wonderful photos.

*Note: If you have any vacation photos to share of interesting geologic formations, please email with information to [manager@kgslibrary.com](mailto:manager@kgslibrary.com)*

---

# NEWS FROM THE KANSAS GEOLOGICAL FOUNDATION

---

22 June 2011



Dear KGF and KGS Members,

The Kansas Geological Foundation Board and I would like to thank everybody that attended the Annual KGF Mixer in May. We had a wonderful turnout for this event along with excellent food, drink, and company. We would also like to thank the sponsors and those that donated money to make this party happen. It is a fun way to promote the Foundation and its' causes as well as for all of us to get together before summer. Thanks again to everybody.

I visited with Ted Jochems briefly last week regarding the Accelerated Integration Project. We have two fulltime people working this summer and great progress is being made with the sorting, scanning and cataloging of the multitude of data that needs to be incorporated. We are continuing to accept monetary donations throughout the year to facilitate this enormous project, so please keep this ongoing project in mind.

The Kansas Geological Foundation awarded scholarships this spring to several college students for the fall semester. Once again, we received many applications from the various Kansas universities and are pleased that we can provide some funding to help these young students pursue their geological degree.

The KGF Board takes a summer vacation from their Board meetings for a few months, which is a good thing, considering how busy we all are! Enjoy your summer and thank you again for your support.

Respectfully,  
Beth A. Isern  
KGF President



*Nolan Mans and Megan Haas have been working for approximately 30 days and have checked 2710 logs against our files and have found on average, 47% of them are not in our files. So this effort is definitely worth the time & money. They both will be working through the summer months and if we can keep enough funds coming in for this project, we can keep them working longer and get more data into our files for your use. Please consider a mid-year gift to the Foundation.*

---

# Kansas Geological Society Board Minutes

---

## Kansas Geological Society Board Minutes *Condensed version for Bulletin*

**May 10, 2011** Mr. Doug Davis called the meeting to order at 11:42 a.m.

### FINANCIAL REPORT/MANAGERS REPORT

- A. **Treasurer's Report**- Mrs. Noel presented us with the Treasurer's report for April 2011. The CD that expired in April at Kanza State Bank was moved to a CD at Relianz Bank with a rate of 1.23% for 13 months. The earliest a CD will be maturing is June 23, 2011 at Kanza State Bank. *Mr. Scribner moved to accept the Treasurer's report as presented. Mr. Dixon seconded the motion and the motion passed unanimously.*
- B. **Manager's Report**- Mrs. Radford presented the Manager's Report for April 2011. Monthly income was \$53,661.06 and expenses were \$49,488.03, making the profit \$4,173.03 for the month. Mrs. Radford noted that there is about \$1,823 in Accounts Receivable that is over 120 days due. The "KGS Management" fee will be eliminated in future WDL reports since it has been purchased by the KGS. Mrs. Radford is giving discounts to college students who are working on school projects. The library will need to replace an employee for a part-time position.

### OLD BUSINESS

- A. **Backlog of Well Information from the KCC to be Scanned** - Mrs. Radford hired a temporary employee to scan the backlog of well information from the KCC. The Kansas Geological Survey is paying for part of the employee expense.
- B. **WDL Committee** - Mrs. Noel reported the Kansas Geological Survey programmers are working to provide a link on a well from their website to the WDL website that will provide a written list or paper data and thumbnail image of digital data available for purchase.

### NEW BUSINESS

- A. **Continuing Education** - Bob Cowdery is working with Larry Richardson to provide a condensed course in Subsurface Geology that Larry is teaching at WSU. Bob is also scheduling speakers for the Fall 2011 Technical programs.
- B. **Library purchased Corel Draw software** - The software will enable the Library to print geological reports created in Corel Draw.
- C. **KGS Picnic** - The annual picnic will be on Friday, August 19<sup>th</sup> at All Star Sports West from 6:00 to 10:00 pm. This weekend coincides with the start of the KIOGA Annual Convention on August 21<sup>st</sup>.
- A. **Geophysical Society of Kansas Honorary Lecturer** - Tad Smith with Apache Corporation, Houston Texas, will present "Practical seismic petrophysics: The effective use of log data for seismic analysis" on Tuesday, October 11<sup>th</sup>, in Wichita.

**ADJOURNMENT**- *Mr. Saenger motioned to adjourn the meeting at 1:11 p.m. and the motion passed unanimously.*

Respectfully submitted, Robert Milford, Secretary

***The KGS Board opted to not hold a meeting in the month of June, 2011. All board packets were emailed out to board members.***





**You Can Now Log Into the Walters Digital Library without belonging**

**Use guest / guest for username & password**

**This will allow you to see what's in our database**

**You won't be able to download of course but you can see if we have what you are looking for.**

**You might find this helpful when placing an order with the KGS Paper Library.**

[www.kgslibrary.com](http://www.kgslibrary.com)

**Kansas Geological Society & Library** | Home - Mozilla Firefox

File Edit View History Bookmarks Tools Help

http://www.kgslibrary.com/index.cfm

Most Visited My Yahoo! WDL Robert F. Walters Digi... Gmail - Inbox (1) - kan... Bloomberg.com: Ener... Mozilla Firefox Start P... Google The Kansas Geolog

Bloomberg.com: Energy Prices My Yahoo! Kansas Geological Society & Libr...

**Kansas Geological Society & Library** Founded in 1923

Sign in to Robert F. Walters Digital Geological Library

guest guest Sign In

User Name Password

Home About Officers Bulletins Events Tech Talks KCC Boxes & Logs Membership Links Contact

**Library**

The Kansas Geological Society Library has the most complete collection of oil and gas well data for the State of Kansas and surrounding areas. Donated by industry since 1923.

**Robert F. Walters Digital Geological Library**

Version 1.1

Stitched TIFF images are now legible in Petra

**FYI**

**Are you aware??????**

**We keep a list of all the new data coming from the KCC to our Paper Library in an Excel Spreadsheet.**

**On the Home Page of [www.kgslibrary.com](http://www.kgslibrary.com)**

**You will find a link "KCC Boxes & Logs"**

**If you click on this link, you will be able to download the list of new well data received.**

**If you do not find it in the file cabinets, please ask staff and they will assist you in locating the new data in our boxes.**

**Some of this data has not been entered yet, and we must keep track of it so .....**

**PLEASE — ALWAYS ASK STAFF TO HELP YOU.**

## **NEW KANSAS GEOLOGICAL SOCIETY PUBLICATION**

### **New Plays and Ways Kansas Oil & Gas Fields, Vol. VI**

**In cooperation with Kansas Geological Survey  
And compiled by Dan Merriam**

**This volume covers 11 oil & gas field studies with emphasis on new techniques and significant fields in Kansas.**

**This volume is printed in full color—Price: \$40.00 + Postage**

#### **New Plays**

- ◆ Looking For New Oil in Old Places: the Nemaha Overthrust Belt, by Lee C. Gerhard
- ◆ Hugoton Revisited: A new Look at an Old Field, by Martin K. Dubois
- ◆ Niobrara Chalk Gas Fields Play in Northwestern Kansas, by K. David Newell and W. Lynn Watney
- ◆ Kansas Coalbed Methane Play, by K. David Newell and Rolland J. Yoakum
- ◆ Cherokee Sand Discoveries in the Butterfield Trail, Maddie, Karis, Karis North, Witthuhn Northwest and Butterfield Fields in Eastern Trego County, by Beth.A. Isern and Larry Friend

#### **New Ways (Field Studies)**

- ◆ Old oil and new gas production at the School Creek North Field in Cowley County, Kansas by S.J. Mazzulo
- ◆ Slick-Carson Oil Field, Cowley County, Kansas, by Dan Merriam
- ◆ A New Look at the Davis Ranch and Davis Ranch Northeast oil fields, by Kyle E. Gorynski & Anthony W. Walton
- ◆ Herd Viola Pool Trend Comanche County Kansas, by Larry J. Richardson
- ◆ A History of the Fairport Field in Russell County Kansas, 120 Mile Step-Out, by Ernie Morrison
- ◆ Sigle North oil field in Osborne County, by Mike Dealy

**Call to order: 316-265-8676  
Or email: [manager@kgslibrary.com](mailto:manager@kgslibrary.com)**

**The Kansas Geological Foundation has a Speaker's Bureau which provides speakers to organization, schools, etc. If you would have material you would like to present as a member of the Speaker's Bureau, please contact Bob Cowdery at 316-267-9030 or [sbc@southwind.net](mailto:sbc@southwind.net)**

# Geo-Scenes



## Modern Carbonate Field Studies in Belize

The identification of specific reservoir plays, or the generation of oil/gas prospects in a petroliferous basin, obviously requires analysis of all available geologic information. The idea for reservoir plays originates from one's experience in and/or knowledge of depositional systems in sedimentary rocks gained from personal experience or reading papers and books on these subjects. Likewise, the formulation of well-conceived geologic prospects is based on their relationship to local depositional facies models and structural analysis within an overall framework of the regional geology and geologic history of the area being explored. Such idea generation is the essence of Wallace Pratt's long-revered philosophy, modified for political correctness here, that "*oil is found in the minds of geologists*". A long-standing approach to understanding depositional facies systems in ancient rocks as analogs of stratigraphic and paleogeomorphic reservoir trap systems has been to go into the field to examine modern sediments as well as ancient rocks. Seeing what modern depositional systems are all about, and relating them to ancient rocks, is where prospecting ideas are born. As the famed and successful Permian Basin petroleum geologist Dr. Jack Elam used to preach, without creative and innovative new ideas, we rapidly risk growing stale geologically.

In this vein, together with some of my Geology Department colleagues I have led a number of field trips since arriving at WSU in 1987 to examine modern and Pleistocene marine carbonate sediments and limestones in Belize. These trips have been designed either specifically for students, to show them modern depositional processes and products; or for petroleum geologists, engineers, and exploration managers to illustrate the variety, lateral juxtaposition, and scale of modern and Pleistocene depositional facies



*Figure 1—Typical first stop in Belize field trip.*

and post-depositional, diagenetic processes as analogs of how subsurface reservoirs in carbonate rocks work. Such trips have proven invaluable to petroleum geologists for the ideas they help to generate. In this

contribution I will show some representative photos of field studies in northern Belize that were taken in 2007. You may recognize some faces in these photos as many former WSU geology students are now employed in the petroleum patch here in Wichita and surrounding areas.

Figure 1 shows a typical first stop of the first day of such field trips, where we hold introductory lectures on the beach adjoining the beautiful Caribbean Sea to explain the geologic setting of the northern Belize field area and its relevance to ancient rocks. Sand, surf, and sun – can it get any better? Field trip participants, students and professional petroleum geologists alike, are immediately mesmerized early on during the trip by the beauty of modern carbonate environments, the setting of the field area, and the immediate application of ideas and concepts to their own thesis or exploration projects. Field work naturally progresses from land stops to the marine environment (Figure 2), where we continue our lectures aboard small boats guided by expert(?) Belizean boatmen. In this photograph, Dr. Burke of the WSU Geology Department is lecturing on modern coral reefs in shallow-marine, high-energy environments. Of course, no field excursion to Belize is ever complete without examining modern mud-mounds, which coincidentally are the site of massive dolomitization here in Belize. In Figure 3 we see some field trip participants who pulled the boats onto the mud-banks as the water obviously was too shallow to motor through. What they soon realized as they continued walking onto the shoal is that mudbank sediments are very soft and unconsolidated, and they quickly begin to sink up to their hips in dark, fetid mud (stinky, for sure -- but modern dolomitization here is converting an



*Figure 2—Dr. Collette Burke lecturing on modern coral reefs in shallow –marine, high energy environments.*

otherwise tight, Holocene lime mud into a porous, reservoir-grade rock beneath our bare feet!!).

These Holocene carbonate sediments in northern Belize overlie Pleistocene limestones that were deposited about 130,000 years ago during a higher-than-present interglacial sea-level stand. I am shown in Figure 4 attacking an outcrop of the Pleistocene limestone with my hammer in order to show the field trippers the tremendous meteoric dissolutional interparticle and biomoldic porosity that developed beneath the top-of-Pleistocene subaerial

unconformity here. At this locality there is also a 1000 yr-old Maya site where one can find many pottery



*Figure 3—walking through the mudbanks*



*Figure 4—above, Dr. Mazzullo with rock hammer in hand.*



*Figure 5—at left, the group relaxing and discussing the days activities.*

sherds and chert tools made by the Maya. Finally, the field days ends and we all adjourn, tired and sunburned, to the patio of the hotel where we relax and enjoy cold beverages, chat with the boatsman (the sun-darkened fellow on the left side of the photo), and relive the geologic adventures of the day.

*submitted by Sal Mazzullo*

*Experience, Integrity, Innovation...*



SEISMIC SERVICES, LTD.

[www.sterlingseismic.com](http://www.sterlingseismic.com)

**Renegade Seismic Studio Refraction Statics  
Z-White Spectral Enhancement  
Tsunami Pre-Stack Time Migration**

Projects from one square mile "Postage Stamp" 3Ds to the 1,100 square mile nine 3D merge through PSTM we completed in 2006, no project is too small or too big. All projects are given the same attention to detail that we have become known for.

**Structural or stratigraphic, we've got the experience  
to provide you with a superior dataset.**



**303-347-9011**



## **NeuraJet17** Quality Log Prints Up to 17" Wide

Spend more time focused on E&P operations and less time printing. See why the NeuraJet17 is the ideal log printing solution for you and your organization.

- Designed for continuous fanfold paper
- Top of form prints up to 17 inches wide
- Automatic loading, printing & stacking
- First year warranty included

**For a demonstration  
call 1.281.240.2525  
[www.NeuraJet17.com](http://www.NeuraJet17.com)**

**Neuralog**

*Turning Paper Into Petroleum*

© 2011 • Neuralog • [www.neuralog.com](http://www.neuralog.com) • 1.281.240.2525 • 1.800.364.8728

# PROFESSIONAL DIRECTORY

**Kirk Rundle**  
**Consulting Geophysicist**  
 3D Seismic Design, Acquisition to Processing QC,  
 Interpretation and Analysis, Subsurface Integration  
 7340 W. 21st. N., Ste. 100  
 Wichita, Kansas 67205

Office: 316-721-1421 Fax: 316-721-1843  
 Email: kirk@rundlegeo.com

**ROGER L. MARTIN**  
*Independent Petroleum Geologist*  
 200 E 1st St, Ste 405, Wichita, KS 67202

Office 316-833-2722 Cell: 316-250-6970  
 KS Field Cell: 316-655-1227  
 Fax: 316-425-3829  
 Email: rogermartingeo@yahoo.com



**GeoCertified, LLC**  
 Professional Geological Services  
 Hydrocarbon Detectors and Geologist Onsite 24/7

Phone: (913) 441-2311 • Cell: (913) 544-7527  
 www.geocertified.com

**ALFRED JAMES III**  
*Petroleum Geologist*  
 Kansas - Colorado - Utah

200 W. Douglas, Ste. 525, Wichita, Kansas 67202

SIPES # 1111  
 Office (316) 267-7592  
 alfred.james55@yahoo.com

Tel.: (972) 712-9036  
 Fax: (972) 712-0258  
 Cell: (214) 223-1784

**LANG J. FUQUA**  
 Certified Petroleum Geologist

4201 Tanglewood Ln.  
 Frisco, Texas 75035

**M. Bradford Rine**  
*Honorary Life Member—Kansas Geological Society*

Licensed Geologist—KS. #204  
 Registered Professional Geologist—Wyo. # 189  
 Certified Geologist—A.A.P.G. # 2647  
 S.I.P.E.S. # 1584 S.P.E. #109833-4

PROSPECT EVALUATION • PROSPECT GENERATION  
 WELLSITE SUPERVISION • EXPERT TESTIMONY • OPERATIONS  
 PROPERTY EVALUATION • RESERVOIR STUDIES  
 DRLG./COMP. CONSULTATION

Suite 415 Office: (316) 262-5418  
 100 S. Main Fax: (316) 264-1328  
 Wichita, KS 67202 Cell: (316) 250-5941

**WESLEY D. HANSEN**  
**Consulting Geologist**  
 Well site Supervision  
 Geologic Studies  
 212 N. Market, Ste 257  
 Wichita, Kansas 67202  
 Off: (316) 263-7313  
 Mobile: (316) 772-6188



Paul Gunzelman  
 President/Geologist

Wichita, Kansas 316.634.6026  
 email p.gun@sbcglobal.net



**KEVIN L. KESSLER**  
 INDEPENDENT/CONSULTING PETROLEUM GEOLOGIST

WELLSITE SUPERVISION • GEOLOGIC RESEARCH  
 OIL & GAS PROSPECTS  
 KANSAS & EASTERN COLORADO

MAILING ADDRESS PHONE  
 1199 N. PONDEROSA RD. RES.: (316) 522-7338  
 BELLE PLAINE, KS 67013 MOBILE: (316) 706-6636  
 EMAIL: KKESSLER1199@AOL.COM

**ROBERT J. GUTRU**  
**Geologist**

300 Farmers & Bankers Bldg.  
 200 East First Street  
 Wichita, Kansas 67202  
 Off: (316) 265-3402

**KGJ ENTERPRISES**

Contract Oil & Gas Accounting &  
 Office Management

Kathryn G. James, MBA (316) 775-0954  
 4278 SW 100th ST. (316) 250-5989  
 Augusta, KS 67010 kgjames@onemain.com

**MELLAND ENGINEERING, INC.**  
*Petroleum Engineering & Geological Consulting*

**James E. Melland, P.E., P.G.**  
 President  
 Office: (620) 241-4621 Fax: (620) 241-2621  
 jamesm@mellandengineering.com  
 www.mellandengineering.com

P.O. Box 841, McPherson, KS 67460

**Blue Ribbon Drilling, LLC**

PO Box 279, Dewey, OK 74029

Phone and Fax: 918-534-2322

John's Cell Phone: 918-440-9639

Larry's Cell Phone: 918-440-9638

Jeff's Cell Phone: 918-440-9647

Email: [johnroutree@bratco-operating.com](mailto:johnroutree@bratco-operating.com)

**PLAINSMEN LAND LLC**

Cash available for lease acquisition  
Supporting Oil & Gas Prospects

Dan Earl Duggan

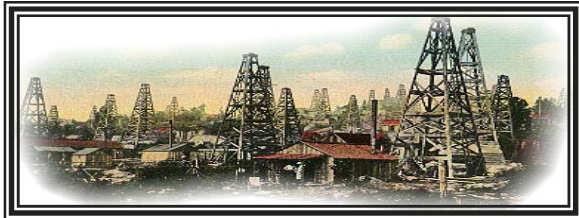
817.347.9300

[danearl@dxwells.com](mailto:danearl@dxwells.com)

Steve Meese

405.820.2442

[smeese3105@yahoo.com](mailto:smeese3105@yahoo.com)



**KGS Picnic**

**Friday, August 19th**

**All Star Sports West**



*Spring* into action  
and join the

**Kansas  
Geological  
Foundation**

*Call 316-265-8676*

*Or send checks to:  
Kansas Geological Foundation  
212 N. Market, Ste. 100  
Wichita, KS 67202*

**The Following Are For Sale**

The Kansas Geological Foundation is offering electric logs on microfiche for sale. This data is from 9 western states. The microfiche will be sold as is, in bulk, by state (no cherry picking). Prices are proportionate to the number of fiche available.

**Prices are firm, you haul or pay shipping**

Utah (~20,000 logs) - \$200.00

Colorado—\$25.00

S. Dakota—\$50.00

New Mexico—\$50.00

Idaho—\$25.00

Arizona—\$25.00

Oklahoma—\$25.00



WESTERN KANSAS  
SOUTHERN NEBRASKA



EASTERN COLORADO  
OKLAHOMA & TEXAS PANHANDLES

**10 Drilling Rigs**

**10 Well Service Rigs & Roustabout Services**

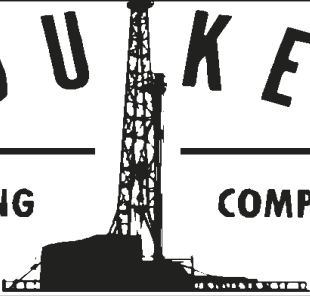
For contract information, please contact:  
Blaine Miller / Drilling Department  
316-858-8607 (Direct) or 316-267-3241

For contract information, please contact:  
Alan Hays, Well Service Sprvsr.  
785-421-2103 or 785-567-8739 (cell)

250 N. Water #300—Wichita, KS 67202

East Highway 24—Hill City, KS 67642

**DUKE**



**DRILLING COMPANY**

---

**ROTARY DRILLING CONTRACTOR**

620 Hubbard PO Box 823  
Great Bend, KS 67530  
Phone 620-793-8366

100 S. Main, Ste. 410  
Wichita, KS 67202  
Phone 316-267-1331  
Fax 316-267-5180



**Tomcat Drilling**

3 Rotary Rigs - Rotary Drilling Contractor  
Southwest Kansas • Oklahoma & Texas Panhandles

Tim Sanders 316-262-8554 phone  
316-259-1652 Cell  
tjsanders@tomcat.kscoxmail.com

100 S. Main, Suite 508  
Wichita, KS 67202

Great Bend (620) 793-5861    Ness City (785) 798-3843    Medicine Lodge (620) 886-5926



Acidizing Available at Medicine Lodge District

Russell (785) 483-2627    Oakley (785) 672-3452

**Lockhart Geophysical Company**

Call (303) 592-5220 FAX (303) 592-5225  
Or E-mail lockden@xpert.net

2D & 3D Seismic Acquisition  
Vibroseis Specialists




**JAPEX GDAPS-4** Distributed System

*We'll give you seismic excellence*

**MBC**

WELL LOGGING & LEASING  
UNMANNED GAS DETECTORS  
MUD LOGGING  
CERTIFIED INSTRUMENT TECH  
SERVING THE KAN-O-TEC AREA SINCE 1990

AUSTIN GARNER                      MARLA GARNER  
24-HOUR PHONE (620) 873-2953  
MEADE, KANSAS



STORES

Ness City, KS 800-589-5733

El Dorado, KS 316-321-9323

Garden City, KS 877-976-1700

Spivey, KS 316-532-5261

McCook, NE 308-345-1542

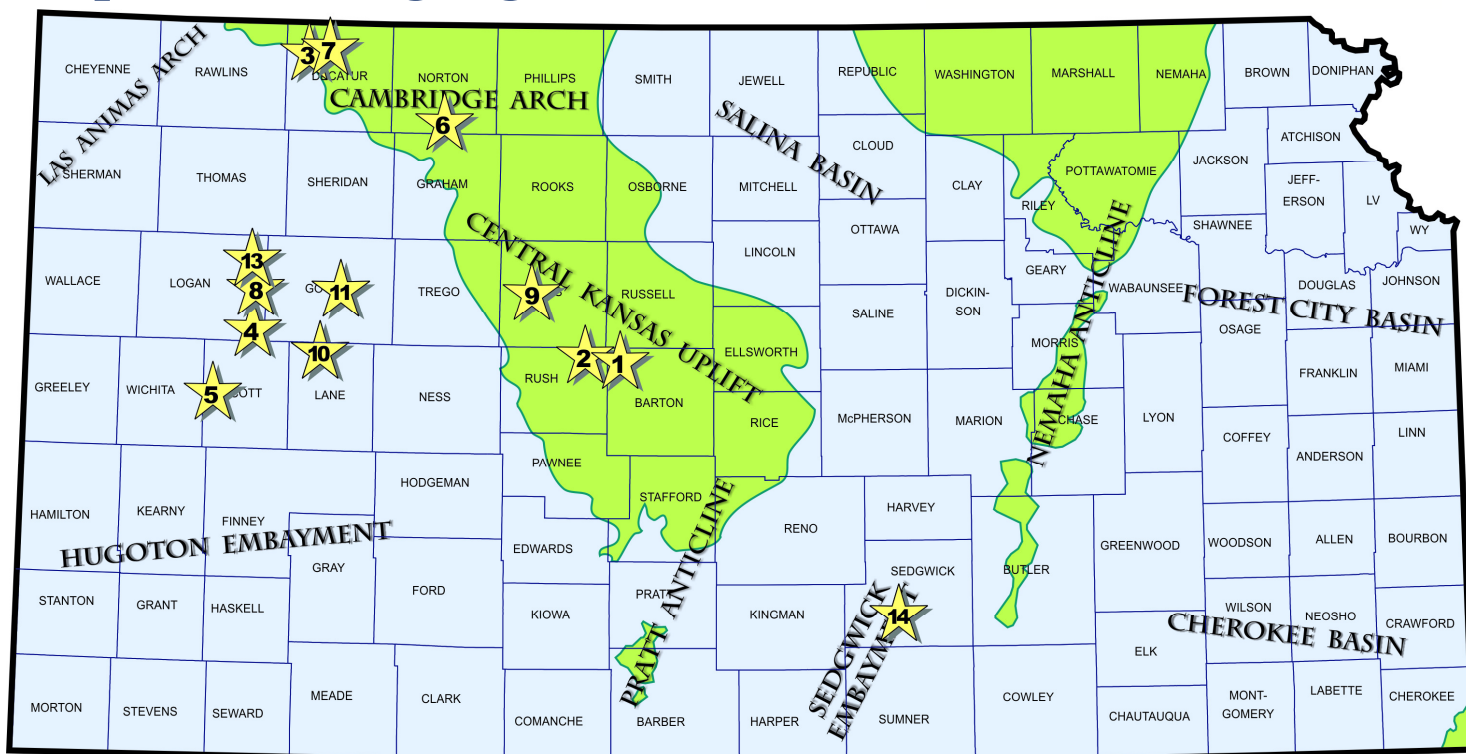
**FULL LINE SUPPLY STORE**  
With Pump Shop  
Offering New & Used  
Pipe, Equip. & Fittings  
Employee Owned

SALES OFFICES

Wichita, KS 800-777-7672

Great Bend, KS 316-792-3130  
Mob: 316-786-4255

**New Office**  
Hugoton, KS 620-428-6604



(1) **Samuel Gary Jr. and Associates, Inc.**, Denver (CO), has discovered new Lansing- Kansas city oil reserves nearly nine miles northwest of the city of Olmits in northwest **Barton** County. Discovery was made at the No. 1-30 Steinert Etal well, located in the SE/4 of section 30- T16s- R15W. The wildcat pool opener was drilled to a total depth of 3,697 ft. by Discovery Drilling tools. No details have been released on production volume. Well site lies one and one-quarter miles east of Gary's Allenbough East field which they established in August last year and has produced nearly 18,000 barrels of oil from the LKC zones.

(2) Elsewhere in **Rush** County, **Samuel Gary Jr. and Associates, Inc.** is pumping 25 barrels of oil and 10 barrels of water per day from an infield pool discovery well located north of the expanded Duck Creek field. The No. 1-7 Stramel, drilled in the C S/2 N/2 S/2 in section 7- T16s- R16W, is producing oil from three separate zones in the Lansing-Kansas City formation from 3,408 to 3,498 ft. overall. Rotary total depth was stopped at 3,631 ft. The infield wildcat lies five-eighths mile north of producing wells in the Duck Creek field, where in addition to the LKC, oil has been produced from the Conglomerate and Arbuckle zones.

(3) **Murfin Drilling Company, Inc.**, Wichita (KS), has a new Lansing-Kansas City oil discovery over one mile east of known production in the Jording East (Lansing-Kansas City) oil field in north western **Decatur** County. Murfin's May No. 1-18 was drilled to a total depth of 4,524 ft. in January this year. Site located in the SW/4 of section 18- T2s- R29W, is about five and one-half miles northwest of the town of Oberlin, Kansas. The well was placed on pump in February for an undisclosed potential. The new field has not been named.

(4) **Lario Oil and Gas Company**, Wichita (KS), has found Cherokee (Johnson Zone) oil deposits at a rank wildcat well in

**Logan** County, about twenty miles southeast of Russell Springs, Kansas. The No. 1-21 Kansas Feed Yards, spotted in the SW/4 of section 21- T15s- R32W, was put on pump on April 25, 2011 at an undisclosed rate. The well was bottomed at 4,600 ft. The new unnamed field is situated over three miles southeast of the one-well Little Pyramids field which was opened by Brito Oil Company in February last year. The pool discovery well has produced nearly 7,000 barrels of oil from the Altamont and Fort Scott limestones of the Marmaton Group.

(5) In **Scott** County, **Lario Oil & Gas Company** has completed the No. 1-21 Boulware as a multizone oil producer from the Marmaton and Cherokee (Johnson Zone) formations. The wildcat well establishes a new unnamed oil field about three-quarters mile south of Modoc, or nine miles west of Scott City, Kansas. Operator drilled the well to a total depth of 5,000 ft. in March this year and put the well on pump by mid-April. Closest known production in the vicinity is located nearly three miles to the southwest in the one-well Modoc field which produced nearly 16,000 barrels of oil from the lower Marmaton formation from 1995 to 2008. Cherokee oil is sparse in the area. Closest recognized Cherokee pay lies over eleven miles to the north of well site in the newly discovered Pence field in section 27- T16s- R34W, discovered by Shakespeare Oil Company in December last year.

(6) **Ritchie Exploration, Inc.**, Wichita (KS), has a new oil discovery with the completion of their No. 1 Circle Ranch (34-B), located in the NW/4 of section 34- T5s- R23W, in southern **Norton** County. The 3,750-foot deep wildcat well was completed for an unknown potential on April 21, 2011. Well site is located nearly three-quarters mile north of production in the Norham field which has produced over 124,000 barrels of crude from the

Lansing-Kansas City and Arbuckle zones since June, 1983. Ritchie's latest find is located two miles south and five miles east of Lenora, Kansas. The new field has not been named.

(7) **Murfin Drilling Company, Inc.**, Wichita (KS), has discovered Lansing-Kansas city oil reserves on the Faith lease located about six and one-half miles northwest of Oberlin, Kansas in northwestern **Decatur** County. The No. 1-7 pool discovery well is producing an undisclosed amount of crude slightly over one mile east of existing wells in the Traer Southeast pool where the LKC zones also have produced since 1980. Well site lies in NW/4 of section 7- T2s- R29W. Rotary total depth was obtained at 4,080 ft.

(8) Elsewhere in **Logan** County, Murfin's No. 1-5 Vanava has opened a new unnamed field with multipay production from the Lansing-Kansas City, Marmaton and Cherokee formations. The wildcat well was completed on pump on April 28, 2011 at site in the SE/4 of section 5- T13s- R32W, or nearly thirteen miles southwest of Oakley, Kansas. The new oil deposits were found approximately one mile east of the High Hat field (Marmaton & Cherokee oil) - another Murfin discovery made in late 2009.

(9) **Meridian Energy, Inc.**, Franktown (CO), is producing an unknown amount of oil at the No. 1 Staab, spotted in the SW/4 of section 35- T13s- R19W in **Ellis** County. The wildcat well found the Lansing-Kansas City zones to be productive. The new unnamed field is situated nearly three-quarters mile northeast of the Stadelman field which produces both LKC and Arbuckle oil. Total depth is 3,898 ft. Site is located three and one-half miles west of Hays, Kansas.

(10) **Brito Oil Company, Inc.**, Wichita (KS), is pumping 83 barrels of oil and 7 barrels of water per day at the No. 1-32 Jennison Unit, located in the SW/4 of section 32- T16s- R29W, **Lane** County. The well has discovered new Cherokee pay source within the Shay East field which previously had produced Marmaton oil since 1983. Britos's new addition is producing oil from Marmaton perforations placed from 4,304 to 4,342 ft. overall and the Cherokee (Johnson Zone) from 4,472 to 4,484 ft. Total depth is 4,564 ft. Well is located about five and one-half miles west of Shields, Kansas.

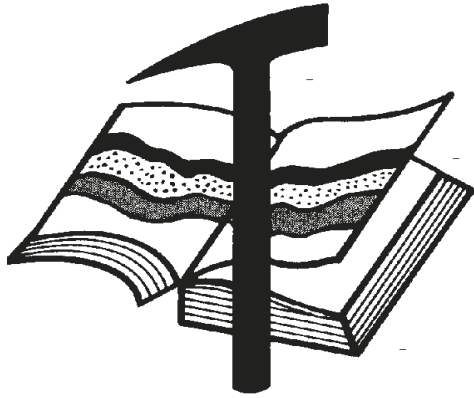
(11) **RL Investments LLC**, Morland (KS), has established a new unnamed Mississippian oil field almost five miles northwest of the Castle Rock North field in **Gove** County, where the Lansing-Kansas City and Mississippian formations have given up crude since 1984. The No. 1 Tuttle was drilled to a rotary total depth of 4,413 ft. at site located in approximately SE SE NW in section 13- T13s- R28W, or about six miles southeast of Gove, Kansas. Production started in April this year. The new field has not been named.

(12) **Black Diamond Oil, Inc.**, Hays (KS), has completed their No. 1 White in **Graham** County for 15 barrels of oil and 2 barrels of water per day. The wildcat well opens a new unnamed field with Marmaton production from a depth of 3,740 to 3,744 ft. WW Drilling tools bottomed the well at a total depth of 3,820 ft. New discovery was made in the NE/4 of section 11- T7s- R22W, about eight miles northeast of Hill City, Kansas. Closest established production in the vicinity lies over one mile away.

(13) **New Gulf Operating LLC**, Tulsa (OK), has established new oil production three-quarters mile east of the Younkin field in **Logan** County. The No. 1 Sheetz, SW/4 of section 16- T12s- R32W, commenced production on April 29, 2011 eight miles southwest of Oakley, Kansas. Operator found oil deposits in the Mississippian formation. Total depth was stopped at 4,780 ft. Completion details have not been released. The new field has not been named.

(14) **Daystar Petroleum, Inc.**, Valley Center (KS), has successfully washed-down a 1984 dry "show" hole in **Sedgwick** County and is producing 44 barrels of oil and 196 barrels of water from the Mississippian formation. The successful completion adds a new pay source and extends the boundaries of the Thome field, which has produced oil from the Lansing-Kansas City zones since 1984. The No. 1-25 Klausmeyer OWWO, located in the SE NE NE of section 25- T28s- R2W, was cleaned-out to 3,504 ft. in March and completed on pump on May 5, 2011. Field area lies about two and one-quarter miles southwest of Schulte, Kansas.





# Kansas Geological Foundation

Web Site: [www.kgfoundation.org](http://www.kgfoundation.org)

**212 North Market  
Wichita, Kansas 67202**

A not-for-profit educational and scientific corporation

## **GOALS:**

- promote geology and earth science
- preserve geological records
- establish memorials and endowments
- support field trips and seminars
- financial aid and grants to students

**PLEASE HELP SUPPORT THE FOUNDATION**

## **Kansas Geological Foundation Services**

The Kansas Geological Foundation provides the following services as a part of the organization's commitment to educate the public regarding earth science.

### **Speaker's Bureau**

A list of speakers available to talk about various aspects of geology may be obtained by contacting Janice Bright at the KGS Library, 265-8676. This service is free to the public.

### **DVD/Videotape Library**

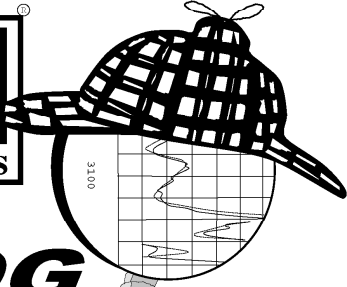
The KGF maintains a DVD & videotape library focused primarily on the various fields of earth science. These tapes may be checked out without charge by the public. To obtain a list of tapes, please contact the KGS Library, 212 N. Market, Ste. 100, Wichita, KS 67202, or call Janice Bright at 265-8676.

The Kansas Geological Foundation was founded in March, 1989 as a not-for-profit corporation under the guidelines of section 501(c)(3) of the tax code to provide individuals and corporations the opportunity to further the science of geology. It is dedicated to providing charitable, scientific, literary and educational opportunities in the field of geology for the professional geologist as well as the general public.

KGF can receive in-kind donations through which the donor may receive a tax deduction. Of equal importance, the KGF provides the financial resources to sort, process and file this data at the KGS library. If you have a donation to make, please contact the KGF at 265-8676.

Your tax-deductible membership donation helps to defray the cost of processing donations and to support public education programs about the science of geology. Annual membership begins at \$50.00 per year. Donations of \$100.00 or more are encouraged through the following clubs:

<b>Century Club</b>	\$ 100 to \$ 499
<b>\$500 Club</b>	\$ 500 to \$ 999
<b>Millennium Club</b>	\$1000 to \$5000
<b>President's Club</b>	\$5000 and over



**LOG**  
**Sleuth**  
**2000**

**AND RASTER IMAGE  
WELL LOGS**

**OVER  
5 MILLION  
LOGS  
AVAILABLE**

**1-800-310-6451**

**SALES@MJLOGS.COM**

**CALGARY • DENVER**

**U.S.A.  
LOGS FOR:**

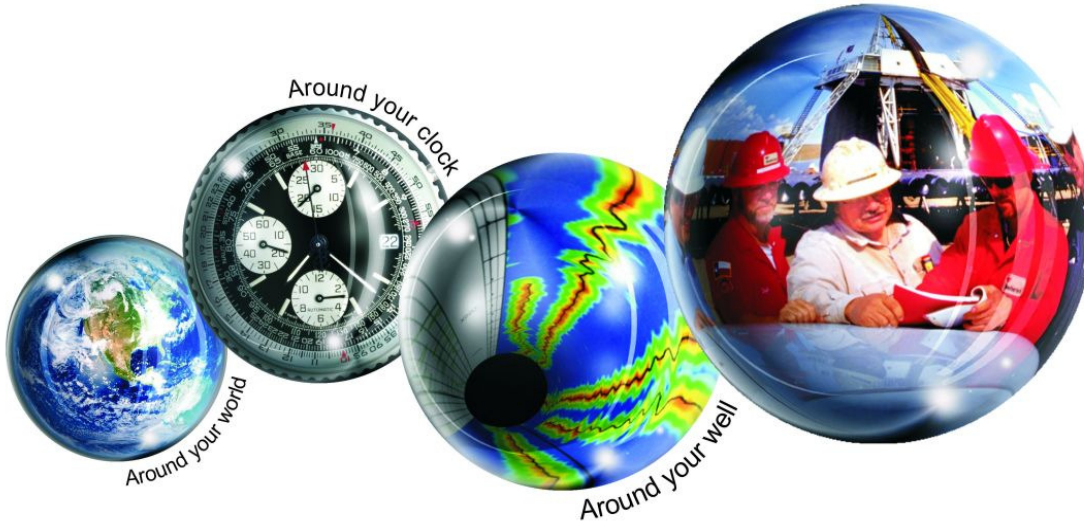
**ALABAMA  
ALASKA  
ARKANSAS  
ARIZONA  
CALIFORNIA  
COLORADO  
FLORIDA  
IDAHO  
ILLINOIS  
INDIANA  
KANSAS  
LOUISIANA  
MICHIGAN  
MISSOURI  
MISSISSIPPI  
MONTANA  
NEBRASKA  
NEVADA  
NEW MEXICO  
NORTH DAKOTA  
OKLAHOMA  
OREGON  
SOUTH DAKOTA  
TEXAS  
UTAH  
WASHINGTON  
WEST VIRGINIA  
WYOMING**

**CANADIAN  
LOGS FOR:**

**ALBERTA  
BRITISH COLUMBIA  
SASKATCHEWAN  
MANITOBA  
FEDERAL AREAS**

# Kansas Geological Foundation Memorials

KGS Member	Date Deceased	Memorial Established	KGS Member	Date Deceased	Memorial Established
Dan Bowles	09/89	1990	Ralph W. Ruuwe	09/00	2000
John Brewer	10/89	1990	Robert L. Slamal	02/01	2001
George Bruce	08/89	1990	Jerold E. Jespersion	06/01	2001
Robert Gebhart	01/90	1990	William A. Sladek	06/01	2001
Ray Anderson, Jr.	11/90	1990	Harlan B. Dixon	06/01	2001
Harold McNeil	03/91	1991	Edward B. Donnelly	08/01	2001
Millard W. Smith	08/91	1991	Richard P. Nixon	02/02	2002
Clinton Engstrand	09/91	1991	Robert W. Frensley	12/01	2002
M.F. "Ted" Bear	10/91	1991	Gerald W. Zorger	01/02	2002
James & Kathryn Gould	11/91	1991	Don L. Calvin	03/02	2002
E. Gail Carpenter	06/91	1993	Claud Sheats	02/02	2002
Benton Brooks	09/92	1992	Merle Britting	2002	2002
Robert C. Armstrong	01/93	1993	Harold Trapp	11/02	2002
Nancy Lorenz	02/93	1993	Donald M. Brown	11/02	2003
Norman R. Stewart	07/93	1993	Elwyn Nagel	03/03	2003
Robert W. Watchous	12/93	1993	Robert Noll	09/03	2003
J. George Klein	07/94	1994	Benny Singleton	09/03	2003
Harold C.J. Terhune	01/95	1995	Jay Dirks	2003	2003
Carl Todd	01/95	1995	J. Mark Richardson	02/04	2004
Don R. Pate	03/95	1995	John "Jack" Barwick	02/01	2004
R. James Gear	05/95	1995	Richard Roby	03/04	2004
Vernon Hess	06/95	1995	Ruth Bell Steinberg	2004	2004
E. K. Edmiston	06/95	1995	Gordon Keen	03/04	2004
Jack Rine	07/95	1995	Lloyd Tarrant	05/04	2004
Lee Cornell	08/95	1995	Robert J. "Rob" Dietterich	08/96	2004
John Graves	10/95	1995	Mervyn Mace	12/04	2004
Wilson Rains	10/95	1995	Donald Hoy Smith	04/05	2005
Heber Beardmore, Jr.	09/96	1996	Richard M. Foley	06/05	2005
Elmer "Lucky" Opfer	12/96	1996	Wayne Brinegar	06/05	2005
Raymond M. Goodin	01/97	1997	Charles B. Moore	09/96	2005
Donald F. Moore	10/92	1997	Jack Heathman	05/06	2006
Gerald J. Kathol	03/97	1997	Charles Kaiser	09/06	2006
James D. Davies	08/88	1997	Rod Sweetman	08/06	2006
R. Kenneth Smith	04/97	1997	Karl Becker	10/06	2006
Robert L. Dilts	05/97	1997	Frank Hamlin	10/06	2006
Delmer L. Powers	06/72	1997	Marvin Douglas	12/06	2006
Gene Falkowski	11/97	1997	Robert W. Hammond	04/07	2007
Arthur (Bill) Jacques	01/98	1998	Eldon Frazey	04/07	2007
Bus Woods	01/98	1998	Pete Amstutz	05/07	2007
Frank M. Brooks	03/98	1998	Charles Spradlin	05/07	2007
Robert F. Walters	04/98	1998	Donald R. "Bob" Douglass	09/07	2007
Stephen Powell	04/98	1998	Vincent Hiebsch	11/07	2007
Deane Jirrels	05/98	1998	Glen C. Thrasher	03/08	2008
William G. Iversen	07/98	1998	Peg Walters	06/08	2008
Ann E. Watchous	08/98	1998	Theodore "Ted" Sandberg	07/08	2008
W.R. "Bill" Murfin	09/98	1998	James Ralstin	11/08	2008
Donald L. Hellar	11/98	1998	Earl Brandt	04/09	2009
Joseph E. Rakaskas	01/99	1999	Walter DeLozier	05/09	2009
Charles W. Steincamp	02/99	1999	Donald D. Strong	01/10	2010
Robert and Betty Glover	10/96	1998	John Stone	02/10	2010
Howard E. Schwerdtfeger	11/98	1999	Craig Caulk	03/10	2010
W. W. "Brick" Wakefield	03/99	1999	Joseph E. Moreland, Jr.	03/10	2010
V. Richard Hoover	01/00	2000	Gene Garmon	03/10	2010
Warren E. Tomlinson	01/00	2000	James F. Dilts	05/10	2010
James A. Morris	01/00	2000	Jerry Pike	05/10	2010
Eric H. Jager	03/00	2000	Donald Hollar	06/10	2010
Kenneth W. Johnson	03/00	2000	Delbert Costa	08/10	2010
Dean C. Schaake	03/00	2000	John Tanner	08/10	2010
Fred S. Lillibridge	05/00	2000	William (Bill) Owen	09/10	2010
Jerry A. Langrehr	07/00	2000	Harold (Hal) Brown	10/10	2010
Clark A. Roach	07/00	2000	Edmund G. Lorenz	11/10	2010
Floyd W. "Bud" Mallonee	10/00	2000			



## All Around You

**Weatherford has always been driven by your needs.**

Now, with the addition of Precision Energy Services we're continuing to build a world of skills, services and technologies that revolve – and evolve – around you.

### **The result?**

An expanded global network of 25,000 people, 730 service bases and 87 manufacturing facilities in 100 countries.

This increased local knowledge and service is there to support you anywhere, anytime. From midday in the Middle East to midnight in the middle of nowhere.

And with greatly strengthened capabilities in the critical evaluation skills of directional drilling and wireline logging, we can do even more to improve the profitability and productivity of your wells.

To see how our sphere of services can work for you, visit [www.weatherford.com](http://www.weatherford.com) or contact either your Weatherford or former Precision Energy Services representative.

Drilling | Evaluation | Completion | Production | Intervention

© 2006 Weatherford International Ltd. All rights reserved. Incorporates proprietary and patented Weatherford technology.

**CHANGE SERVICE REQUESTED**

**KGS BULLETIN**  
 July—August

## July 2011

Sun	Mon	Tue	Wed	Thu	Fri	Sat
					1	2
3	4 Library closed 	5	6	7	8	9
10	11	12	13	14	15	16
17	18	19	20	21	22	23
24	25	26	27	28	29	30
31						

## August 2011

Sun	Mon	Tue	Wed	Thu	Fri	Sat
	1	2	3	4	5	6
7	8	9	10	11	12	13
14	15	16	17	18	19 KGS Picnic 	20
21	22	23	24	25	26	27
KIOGA						
28	29	30	31			